

## Pre Install Steps for Code::Blocks on the Mac OS

Insert your **Mac OS X Install Disc 1** in your DVD drive.

Locate the Mac OS X Install Disc 1 icon and double click it



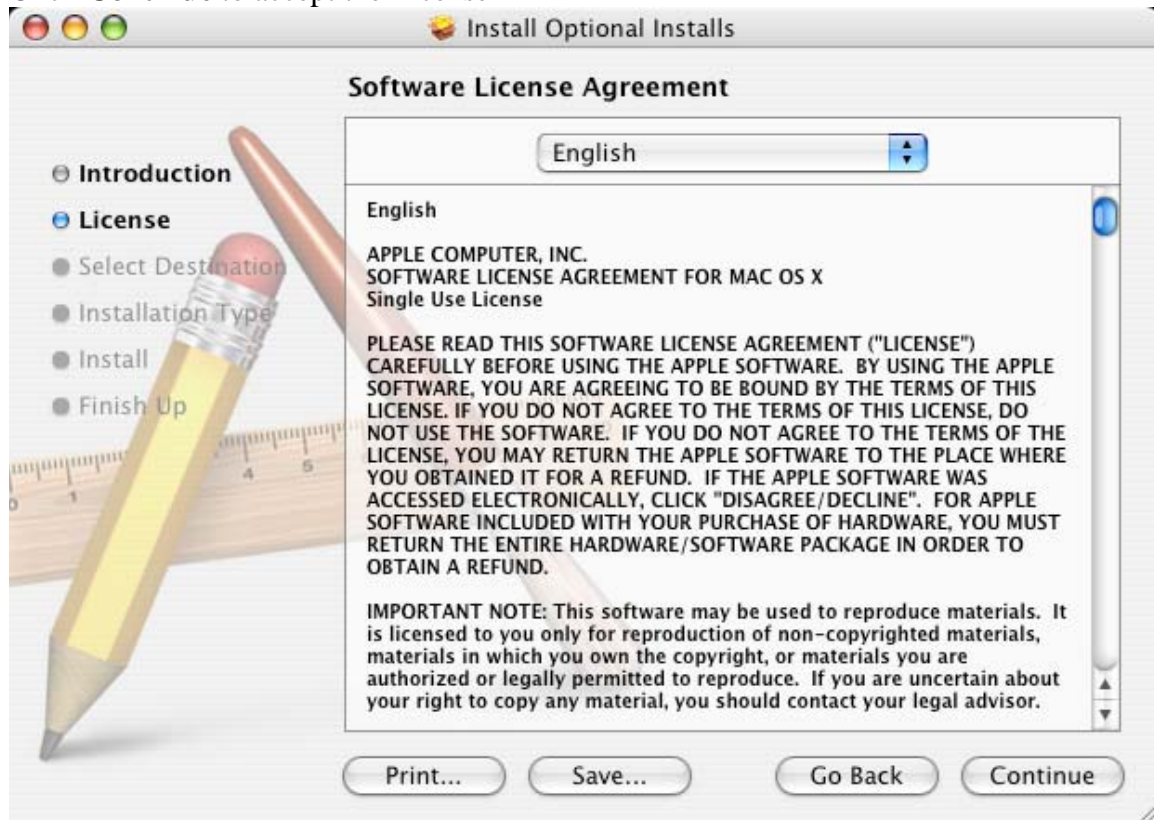
Locate **Optional Installs**



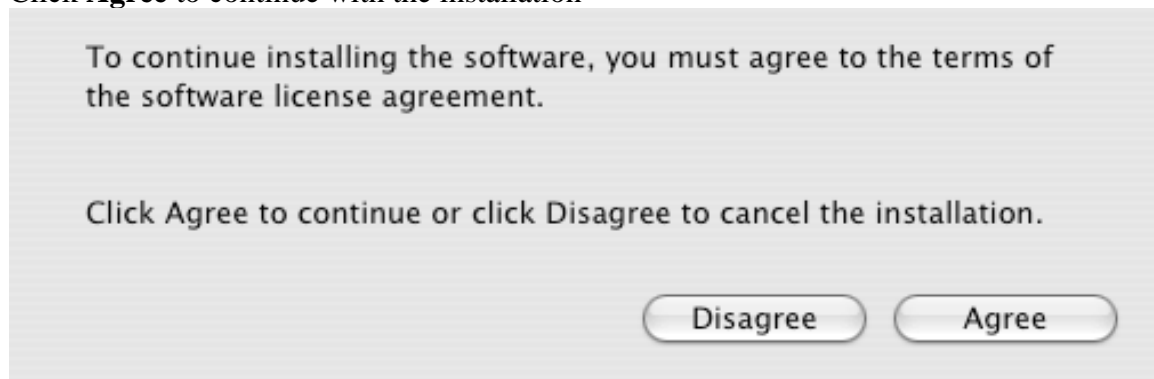
Click on **Continue**



Click **Continue** to accept the License



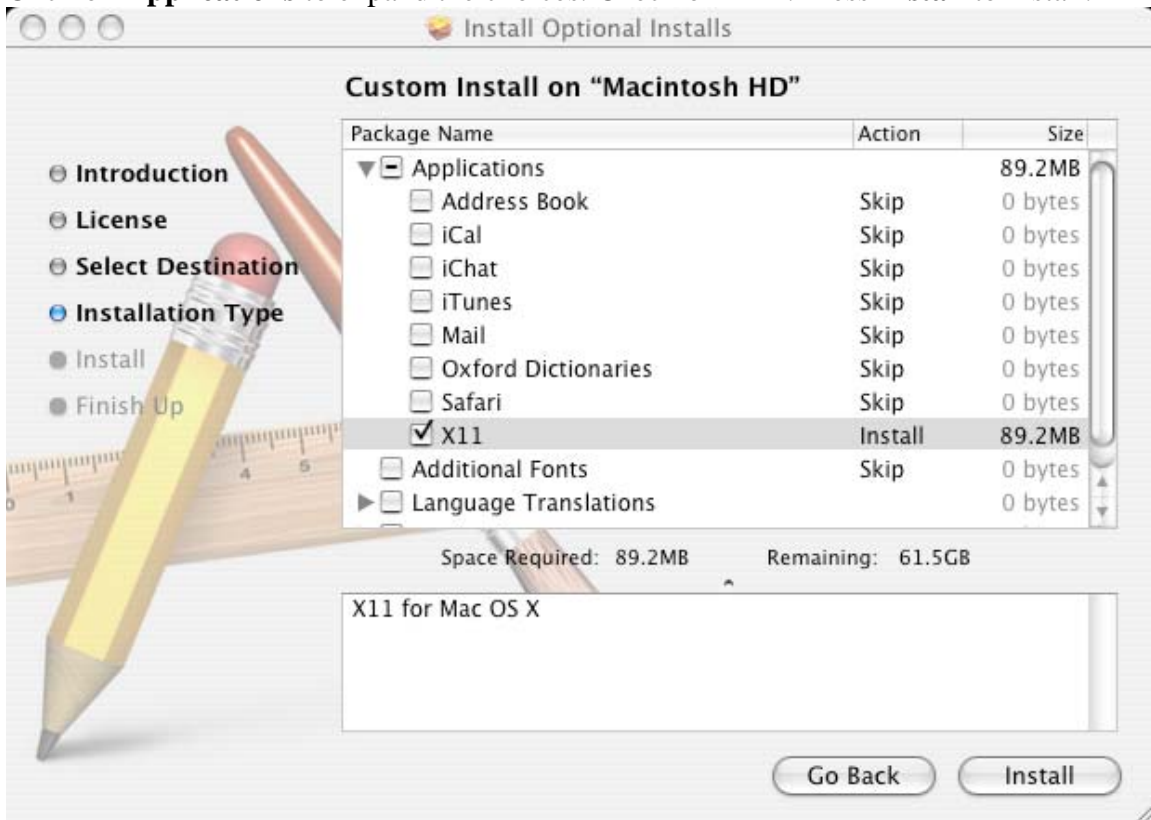
Click **Agree** to continue with the installation



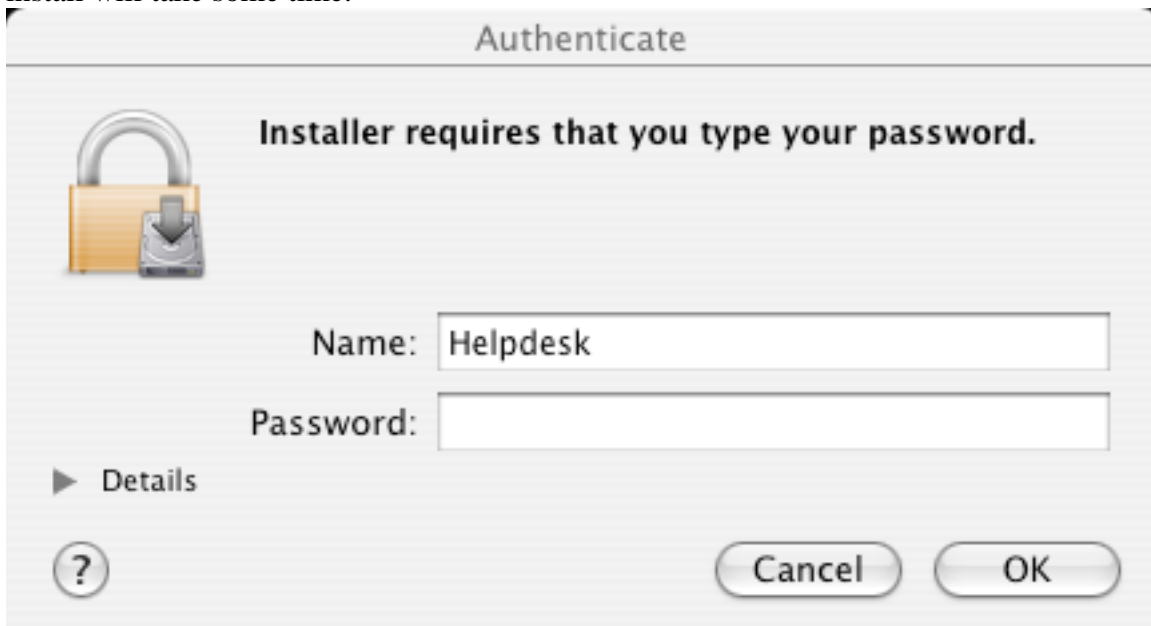
Select the destination by single clicking on your hard drive, and then press Continue.



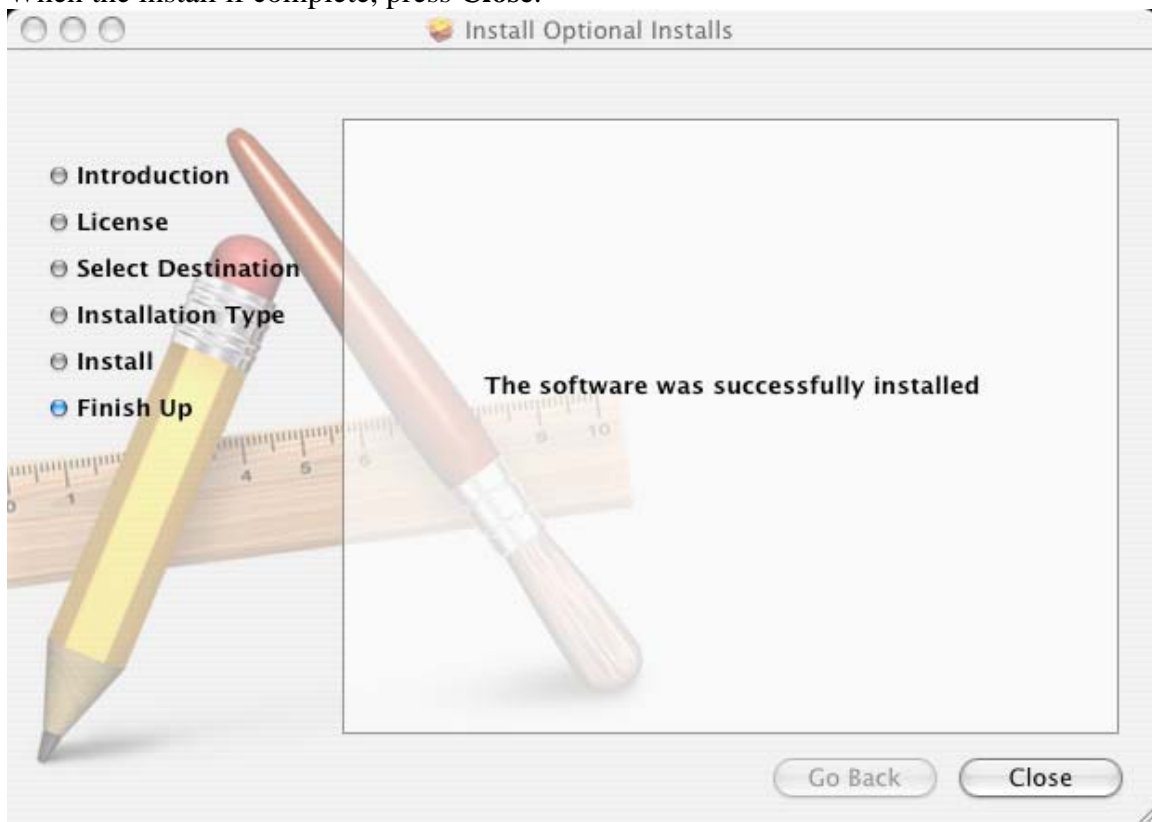
Click on **Applications** to expand the choices. Check off **X11**. Press **Install** to install.



If you are prompted for your password, please enter it and then the install will begin. If you are unsure of your password, leave it blank and press enter. Please be patient, as the install will take some time.



When the install is complete, press **Close**.



Now you can install **Xcode Tools**.

Go back to the Mac OS X Install Disc 1 screen and double click on Xcode Tools



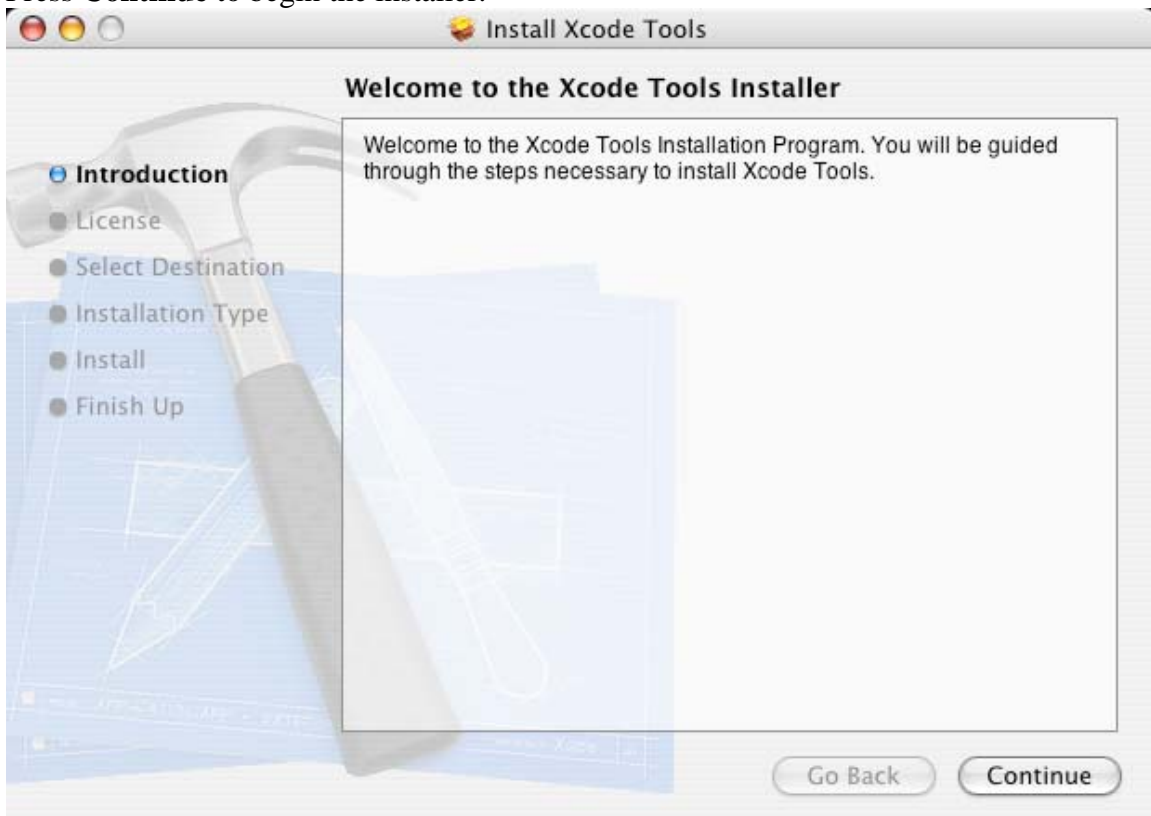
Xcode Tools

Double click on **XcodeTools.mpkg** to begin the install of Xcode Tools



XcodeTools.mpkg

Press **Continue** to begin the installer.



If you are presented with a window similar to below, press **Continue**.



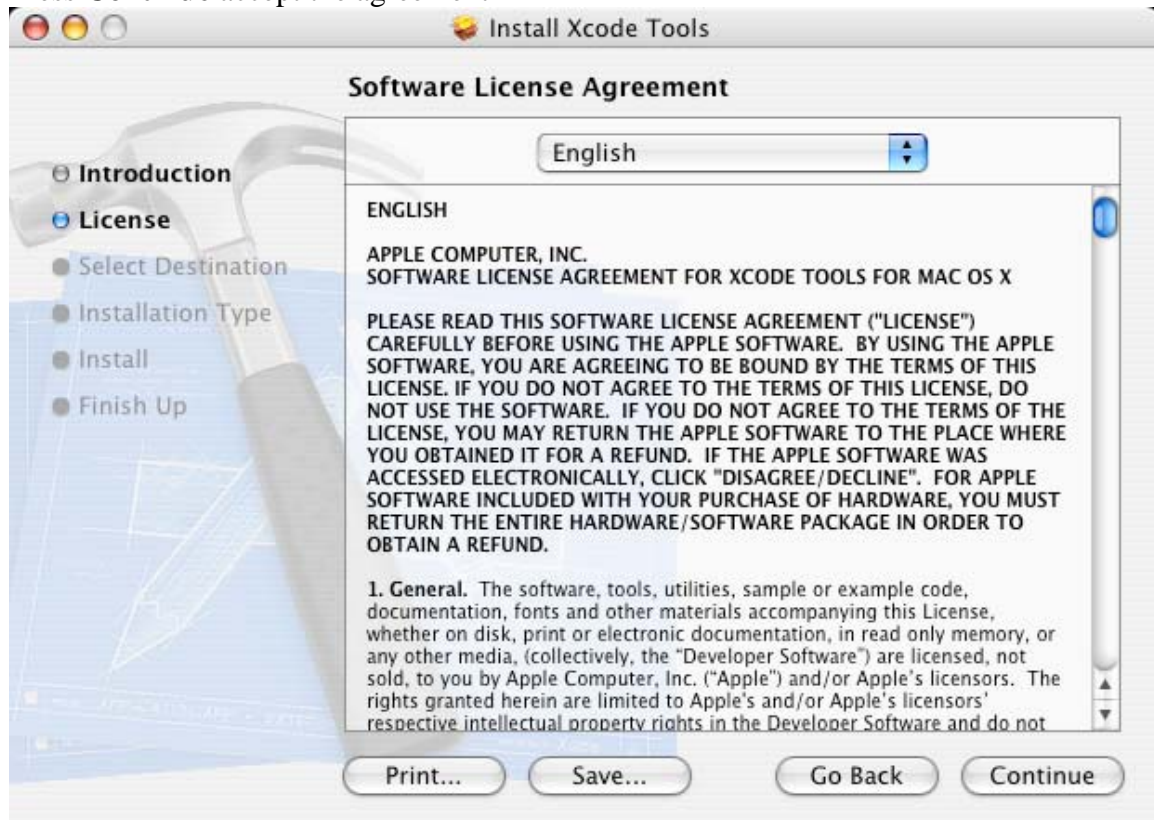
**This package contains a program that determines if the software can be installed. Are you sure you want to continue?**

If you're not sure about the source of this package, click Cancel to prevent it from running the program and installing the software.

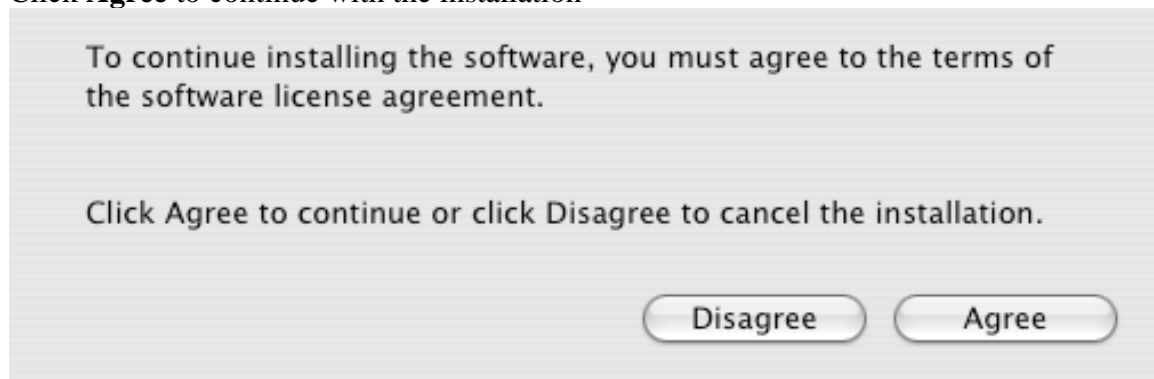
Cancel

Continue

Press **Continue** accept the agreement

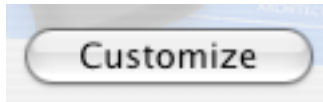


Click **Agree** to continue with the installation



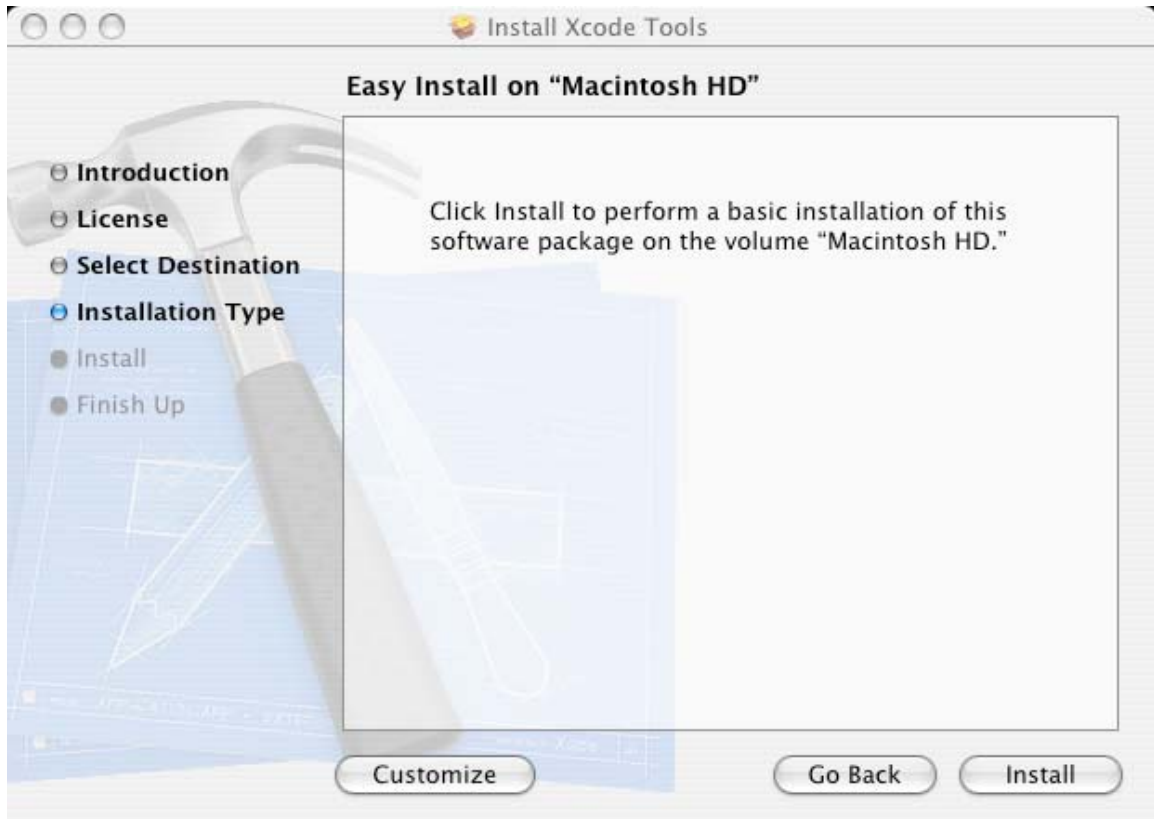
Select the destination by single clicking on your hard drive, and then press Continue.



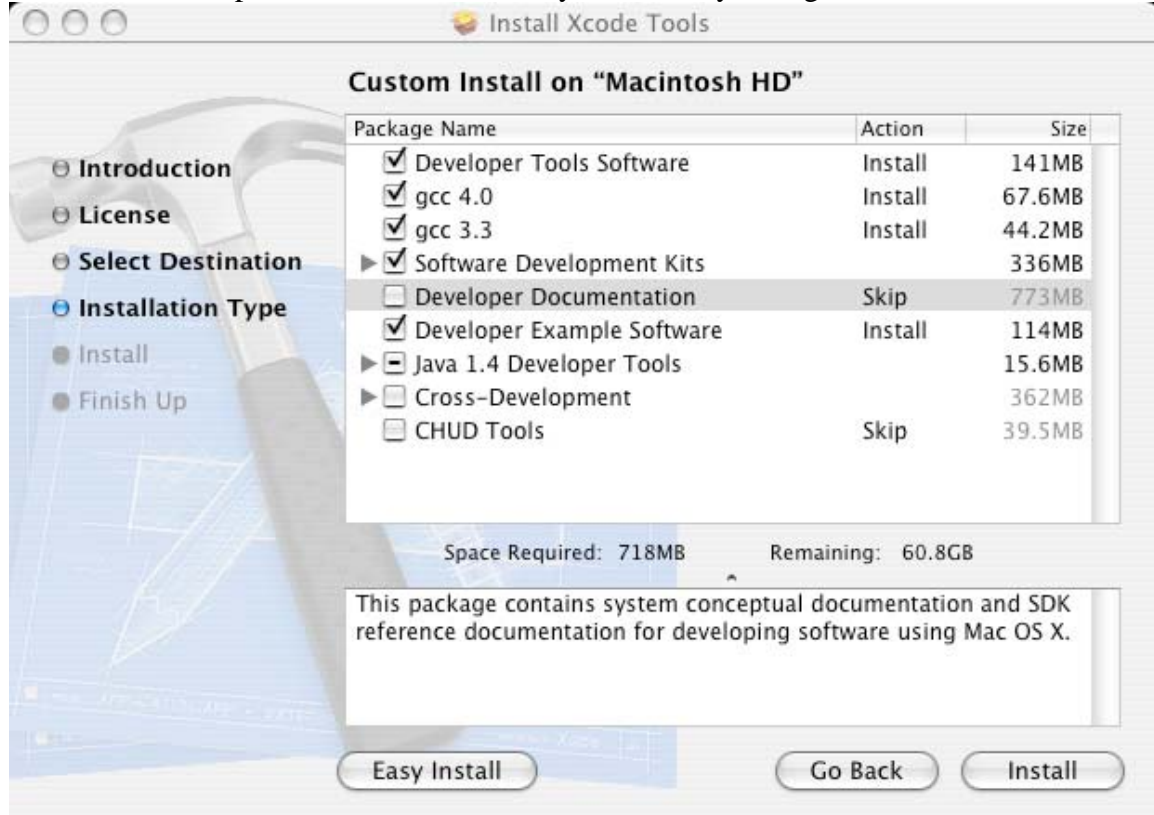


Look for this button in the window below

Be sure to select **Customize** from the menu at the bottom listed below



*Unclick **Developer Documentation**.* There is no need to install that, as it wastes over 700MBs of disk space. Press **Install** when you are ready to begin.



If you are prompted for your password, please enter it and then the install will begin. If you are unsure of your password, leave it blank and press enter. Please be patient, as the install will take some time.

**Authenticate**



**Installer requires that you type your password.**

Name:

Password:

▶ Details?CancelOK

When the install is complete, press **Close** to exit the installer.

